

Entiat School District

School Modernization Project



*Building
our future
together*

Entiat School District #127
2650 Entiat Way
Entiat, WA 98822

**POSTAL CUSTOMER
CARRIER ROUTE PRE-SORT**

**Bulk Rate
Non-Profit Organization
US Postage **PAID**
Entiat, WA 98822
Permit No. 5**

WHAT DOES THE NEW PLAN ACCOMPLISH?

- Student safety is a top priority. Administrative offices will be reconfigured to create a single main entrance to the school. In addition to controlling access to the school, this change will create a more efficient space for staff and visitors.
- The elementary wing will be completely refurbished. This will create a better atmosphere for student learning and enable the increased use of classroom technology by installing new wiring, heating, air conditioning, plumbing, windows, and insulation. These changes will also substantially increase energy efficiency, saving the district's taxpayer's money.
- The kitchen and cafeteria will be moved out of the basement. This will improve accessibility for students, staff, and community members. The new design allows for easier deliveries and complies with requirements of the Americans with Disabilities Act, lessening the school's liability.
- The old kitchen and cafeteria will be converted to classrooms. In addition, new classrooms will be added to the upper level elementary.
- Special education classrooms will be relocated from the portable building to a more central location.
- The road behind the school will be closed to through traffic. Bus lanes will be reconfigured and additional parking spaces and a parent drop-off lane will be added.



WHERE WE FOUND \$2.35 MILLION IN SAVINGS

- **Eliminated 3,110 square feet of new construction by**
 - + Reducing the size of the new cafeteria
 - + Eliminating the 4-classroom addition. New classrooms will be built on the second floor between the cafeteria and gym. Relocating the weight room enables the basement to be converted to classrooms. Additional classrooms will be created by reconfiguring the elementary floor plan.
- Left the existing administrative offices, portable, playgrounds and parking lots in place with minor modifications
- Lowered the base construction cost per square foot by 5% for modernization and 9% for new construction.

DIDN'T I ALREADY VOTE FOR THIS?

Entiat School District ran a bond proposition for \$7.95 million in February 2013. Although over 58% of those who voted approved the bond measure, that was short of the 60% required. After the bond failed, the school board hired a new architectural firm to work with the facilities committee on a revised plan. In July the facilities committee presented the new plan to the school board. The plan accomplishes the priorities from the original plan, but reduces the cost estimate by 30%. *See box at left.*

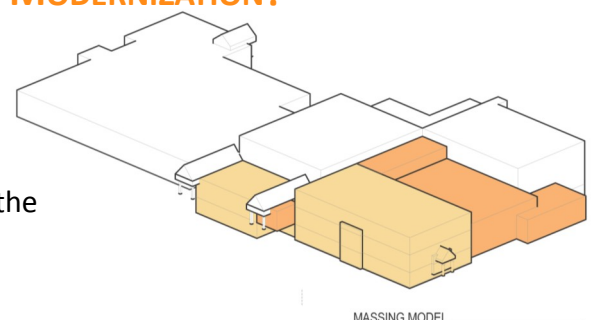
WHO IS EXEMPT FROM THIS BOND?

You may be exempt or partially exempt from paying this bond if you are at least 61 years of age or you are unable to work because of a disability and meet the income requirements. For information, contact the Chelan County Assessor at (509) 667-6365.

WHAT'S THE DIFFERENCE BETWEEN NEW CONSTRUCTION AND MODERNIZATION?

Modernization involves gutting an existing building, replacing outdated or inefficient systems, and reworking the space to better fit the school's needs.

New construction means building a completely new space outside the footprint of the existing building.



MASSING MODEL

WHY NOW?

1. **Good Stewards:** As the school building ages, the cost of maintenance and upkeep rises. It is more fiscally responsible to modernize the school than to continue to repair aging systems.
2. **More Bang for your Buck:** Bond interest rates are still at historical lows, but have started inching upwards. Lower rates mean more bond dollars will go towards the school than to repaying investors. Construction rates are also lower right now, but the reviving economy could mean higher bids.
3. **State Assistance:** The state will provide around \$2.8 million dollars in matching funds for the modernization of the elementary wing to help create a "new" building that would serve effectively for the next 30 years.
4. **Lower Impact:** The current school bond expires at the end of 2013. If passed, the new bond rate will go into effect at the start of 2014. Replacing the old bond with the new one will minimize the impact on taxpayers.
5. **We're Growing:** This year's pre-k, Kindergarten and 1st grade classes combined are double our normal enrollment! Space limitations force larger class sizes, which can negatively impact learning.

WHAT'S THE DIFFERENCE BETWEEN A BOND AND A LEVY?

Money used to remodel or build schools comes from school bonds. Levies pay for day-to-day school programs. An easy way to remember this is "Levies are for learning, Bonds are for building." For the last several years, Entiat has been running a replacement levy every two years. The current levy rate of \$2.76 per \$1000 provides \$595,000 to supplement the school's general fund. In addition, taxpayers have been paying off a bond which financed the high school construction project in 1995; it will be paid off in December 2013. While levies need a simple majority to pass, bonds require 60% approval.

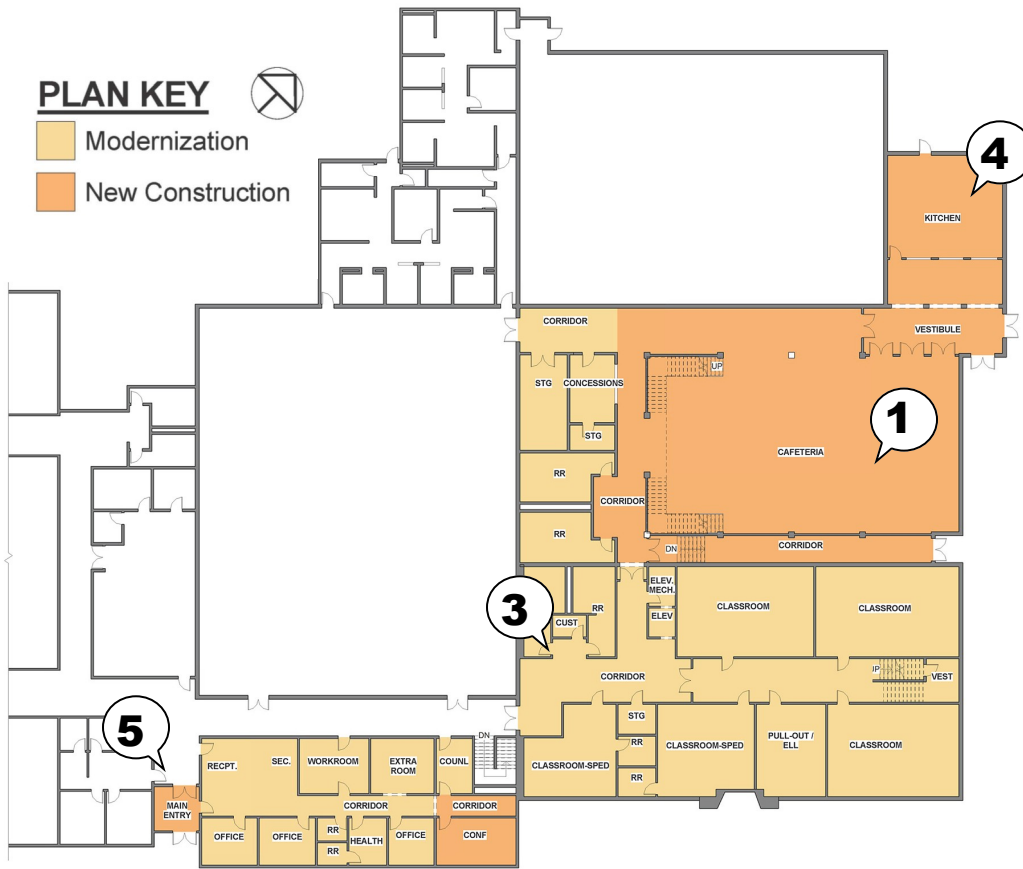
WHAT'S THE BOTTOM LINE?

Entiat School District is proposing a \$5.6 million 20-year construction bond. The projected cost to taxpayers will be around \$1.79 per \$1000. This is \$0.61 more than the current bond rate of \$1.18. The chart below shows how passing the bond would affect property taxes (amounts have been rounded).

Assessed Property Value	New Bond Yearly Total \$1.79 per \$1000 beginning 2014	Expiring Bond Yearly Total \$1.18 per \$1000 ending 2013	Increased Taxes per Year	Increased Taxes per Month
\$75,000	\$134.25	(\$88.50)	\$45.75	\$3.81
\$100,000	\$179.00	(\$118.00)	\$61.00	\$5.08
\$150,000	\$268.50	(\$177.00)	\$91.50	\$7.63
\$175,000	\$313.25	(\$206.50)	\$106.75	\$8.90
\$225,000	\$402.75	(\$265.50)	\$137.25	\$11.44
\$300,000	\$537.00	(\$354.00)	\$183.00	\$15.25
\$400,000	\$716.00	(\$472.00)	\$244.00	\$20.33

PLAN KEY

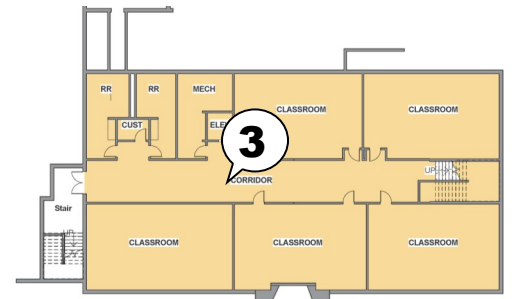
- Modernization
- New Construction



FIRST FLOOR PLAN

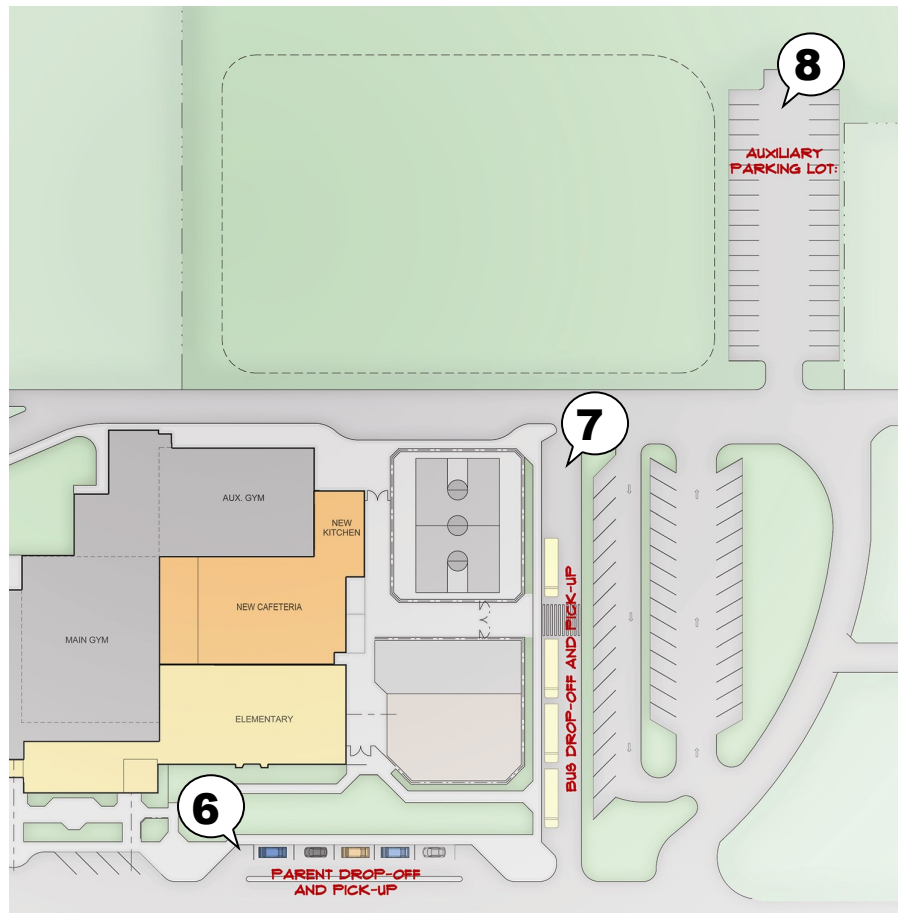


SECOND FLOOR PLAN



BASEMENT PLAN

1. A new cafeteria improves access and safety for students and others.
2. New classrooms are added to the second floor.
3. Modernizing and reconfiguring the elementary wing creates additional space for classrooms and storage.
4. Relocating the kitchen improves efficiency and safety and provides easier access for deliveries.
5. Changing to one main entrance by the administration offices allows for greater security measures and enhances student safety.
6. A new Parent Drop-Off Lane improves safety without sacrificing convenience.
7. The new Bus Lane produces a safer traffic pattern for children crossing to the play field.
8. Additional parking spaces will be created in a new lot to help with overflow at sporting events and other functions.



QUESTIONS OR COMMENTS ABOUT THE SCHOOL BOND OR CONSTRUCTION PLANS?

An informational meeting will be held in the school library on October 9th at 7pm, followed by a tour of the school, or you can call the Entiat School District Office: (509) 784-1800.